

# START NEW PROJECT

Primo Vision time-lapse embryo monitoring system

For further details please read the User Manual  
or contact Primo Vision technical support:  
support.primovision@vitrolife.com

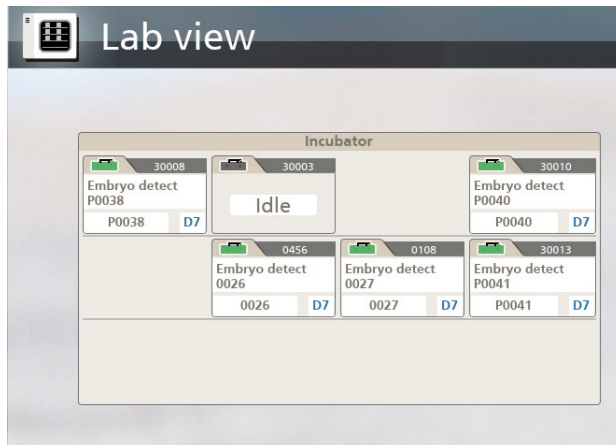
## 1. Log in

Log in the software using your username and password.



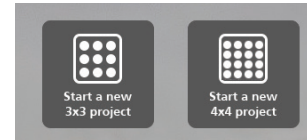
## 2. Double-click to activate

Activate the „idle” microscope you placed the dish in by double-clicking.



## 3. Start a new project

Click on the „Set up a new project” icon. Select also the type of dish you will use in your project.



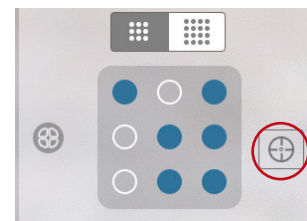
## 4. Wait for images to load

Wait until the microscope is acquiring images from wells. This process can take up to 30 seconds. Please wait.



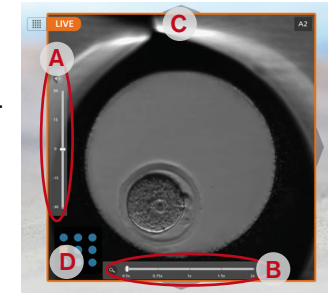
## 5. Select wells

Select wells by clicking where embryos were inserted. Press on “Calibrate” icon for the proper positioning of the microscope.



## 6. Make adjustments

For fine tuning of images double click on a well's image for entering live mode. Set the focal plane (A) if necessary. For viewing a detailed image use zoom function (B). For navigation among the wells use the arrows (C), or the well map (D). The position of the live image is shown on the right upper corner.



## 7. Return to the menu

When all of the wells' images are set, return to microscopemenu.



## 8. Start project

Press on the „Start project” icon.



# START NEW PROJECT

## Primo Vision time-lapse embryo monitoring system

For further details please read the User Manual  
or contact Primo Vision technical support:  
support.primovision@vitrolife.com

### 9. Check details

Under „General“ tab enter patient name, project ID, define the time and date of fertilization and select a “Capturing profile” (in case of research or super user), and check the details.

Day	Duration
Day 1	30 minutes
Day 2	60 minutes
Day 3	120 minutes
Day 4	180 minutes
Day 5	180 minutes

### 10. Provide information

Under “Patient” tab, provide all the information that has been included in this profile. Under “Fertilization” tab, provide all the information that has been included in this profile.

Day	Duration
Day 1	30 minutes
Day 2	60 minutes
Day 3	120 minutes
Day 4	180 minutes
Day 5	180 minutes

**Tip:** You can provide and update this information at a later stage too, until the project is finalized.

### 11. Press “OK”

Press “OK” for starting the project. The first image acquisition can take up 20 second, please wait.

Day	Duration
Day 1	30 minutes
Day 2	60 minutes
Day 3	120 minutes
Day 4	180 minutes
Day 5	180 minutes